

STATEMENTS OF POLICY

Title 4—ADMINISTRATION

PART II. EXECUTIVE BOARD

[4 PA. CODE CH. 9]

Reorganization of the Department of Education

The Executive Board approved a reorganization of the Department of Education effective July 28, 2021.

The organization chart at 51 Pa.B. 4354 (August 7, 2021) is published at the request of the Joint Committee on Documents under 1 Pa. Code § 3.1(a)(9) (relating to contents of *Code*).

(Editor's Note: The Joint Committee on Documents has found organization charts to be general and permanent in nature. This document meets the criteria of 45 Pa.C.S. § 702(7) (relating to contents of Pennsylvania Code) as a document general and permanent in nature which shall be codified in the Pennsylvania Code.)

[Pa.B. Doc. No. 21-1236. Filed for public inspection August 6, 2021, 9:00 a.m.]

Title 4—ADMINISTRATION

PART II. EXECUTIVE BOARD

[4 PA. CODE CH. 9]

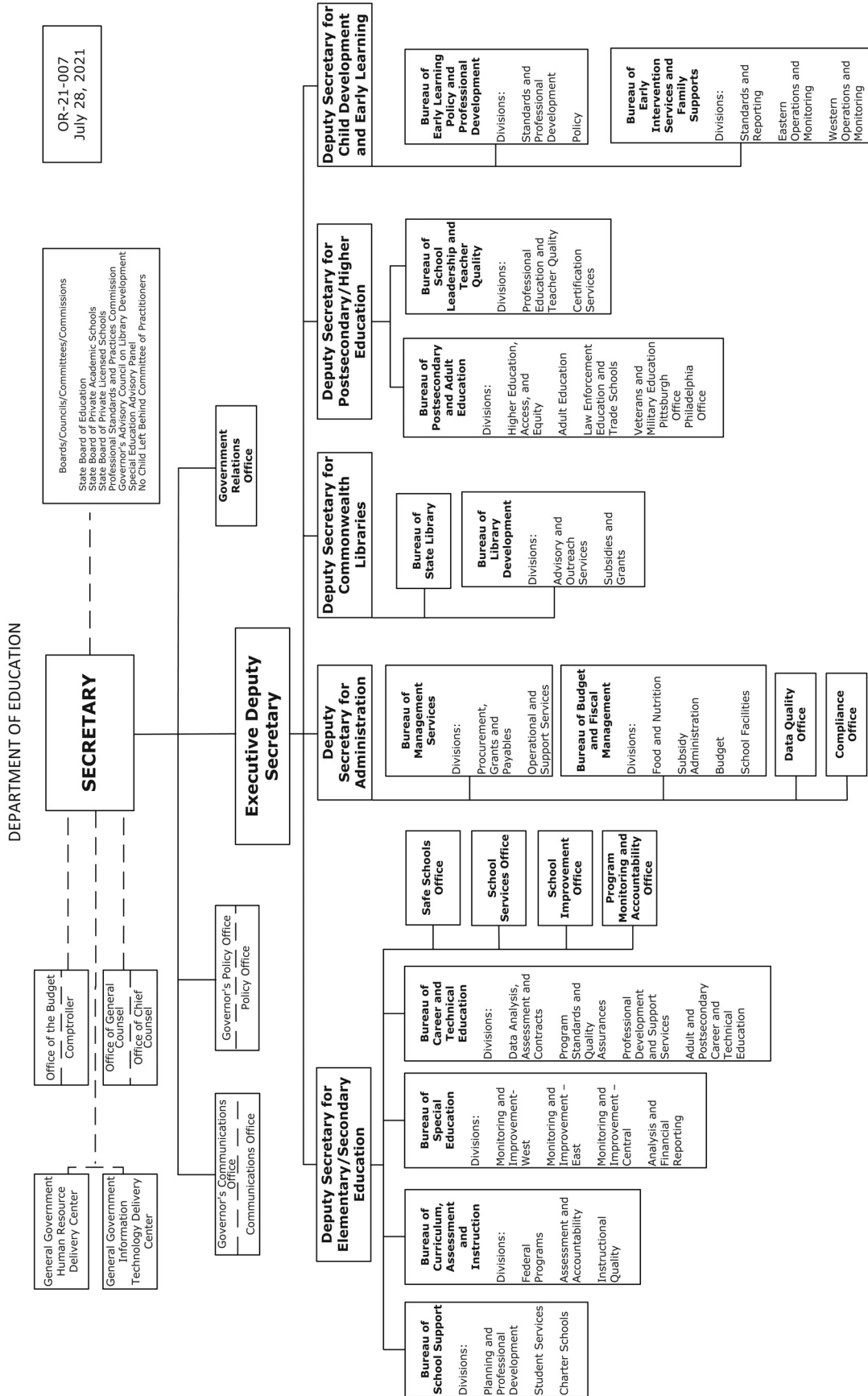
Reorganization of the Department of Human Services

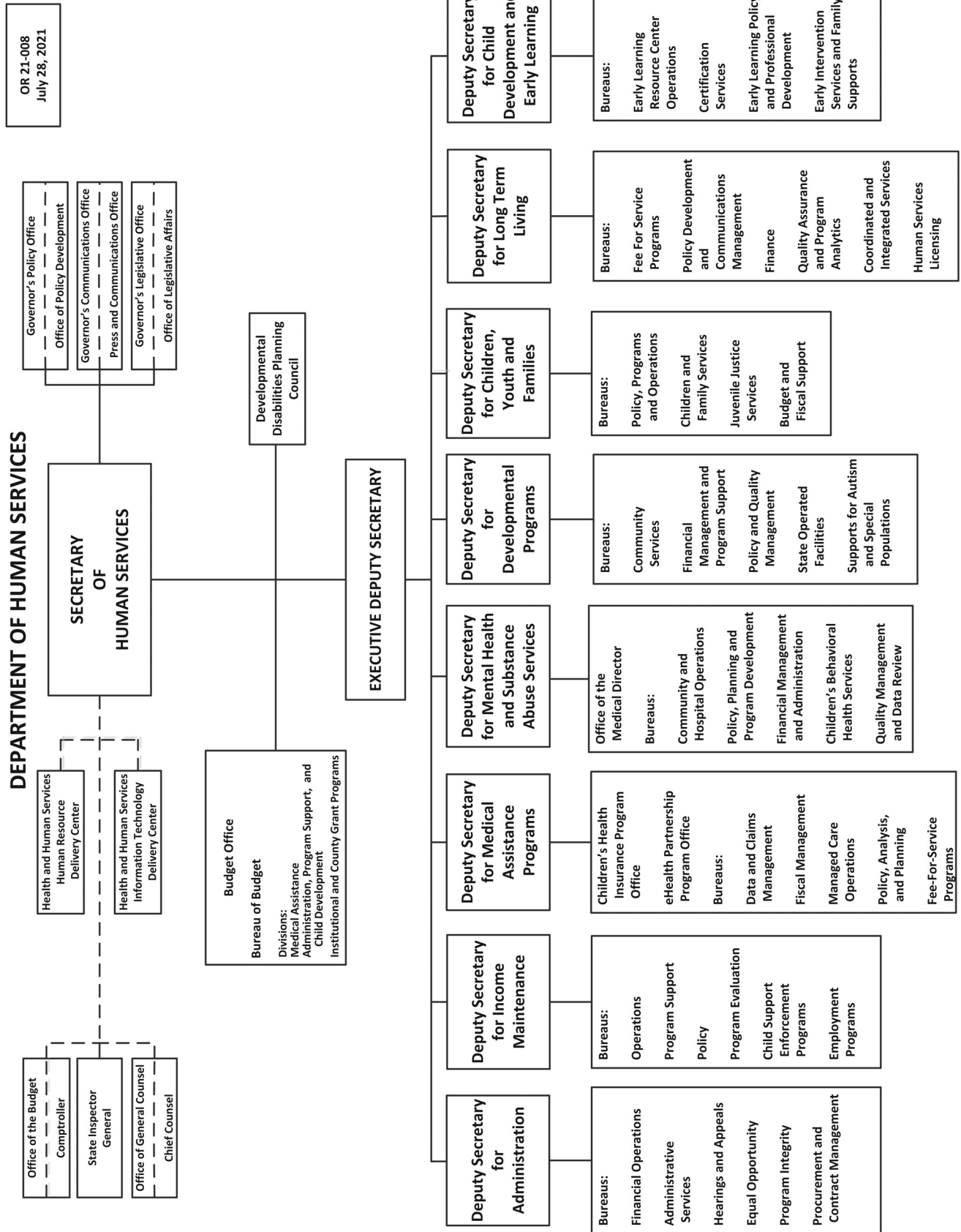
The Executive Board approved a reorganization of the Department of Human Services effective July 28, 2021.

The organization chart at 51 Pa.B. 4355 (August 7, 2021) is published at the request of the Joint Committee on Documents under 1 Pa. Code § 3.1(a)(9) (relating to contents of *Code*).

(Editor's Note: The Joint Committee on Documents has found organization charts to be general and permanent in nature. This document meets the criteria of 45 Pa.C.S. § 702(7) (relating to contents of Pennsylvania Code) as a document general and permanent in nature which shall be codified in the Pennsylvania Code.)

[Pa.B. Doc. No. 21-1237. Filed for public inspection August 6, 2021, 9:00 a.m.]





**DEPARTMENT OF HUMAN SERVICES
DEPUTY SECRETARY FOR CHILD DEVELOPMENT AND EARLY LEARNING**

OR 21-008
July 28, 2021

**DEPUTY SECRETARY
FOR
CHILD DEVELOPMENT AND EARLY LEARNING**

**Bureau of
Early Learning
Resource Center
Operations**
Divisions:
Fiscal Management and
Compliance
Technical Management
and Compliance

**Bureau of
Certification
Services**
Regional Offices:
Southeast North
Southeast South
Northeast
Central
Western

**Bureau of
Early Learning
Policy and
Professional
Development**
Divisions:
Standards and
Professional Development
Policy

**Bureau of
Early Intervention
Services and Family
Supports**
Divisions:
Standards and
Reporting
Eastern Operations and
Monitoring
Western Operations and
Monitoring