

CHAPTER 139. SEASONS AND BAG LIMITS

Sec.	
139.1.	Scope.
139.2.	Definitions.
139.3.	Authority to alter seasons and bag limits.
139.4.	Seasons and bag limits for the license year.
139.5.	Regulated hunting grounds.
139.6.	Field possession and transportation limits.
139.7.	[Reserved].
139.8.	[Reserved].
139.9.	[Reserved].
139.10.	[Reserved].
139.11.	[Reserved].
139.12.	[Reserved].
139.13.	[Reserved].
139.14.	[Reserved].
139.15.	[Reserved].
139.16.	[Reserved].
139.17.	Wildlife management units.
139.18.	Elk management area and hunt zones.

Cross References

This chapter cited in 58 Pa. Code § 135.106 (relating to controlled hunting and trapping area harvest limitations).

§ 139.1. Scope.

This chapter relates to the hunting and trapping of game and wildlife for the license year.

Source

The provisions of this § 139.1 amended September 1, 1978, effective September 2, 1978, 8 Pa.B. 2455; amended November 23, 1984, effective November 24, 1984, 14 Pa.B. 4285; amended June 19, 1987, effective July 1, 1987, 17 Pa.B. 2464; amended June 3, 1988, effective June 4, 1988, 18 Pa.B. 2530. Immediately preceding text appears at serial page (118681).

§ 139.2. Definitions.

The following words and terms, when used in this chapter, have the following meanings, unless the context clearly indicates otherwise:

Daily limit—The maximum number permitted to be taken by one person in 1 day during the open season.

Field possession limit—The maximum number of legally taken wildlife of a species which a person may legally possess or transport between the place of taking and the person's permanent place of residence.

Season limits—The maximum number of wildlife which may be taken during a designated open season or license year.

Authority

The provisions of this § 139.2 issued under 34 Pa.C.S. §§ 322(c)(1) and 2102(a) and (b)(1).

Source

The provisions of this § 139.2 adopted June 3, 1971, effective July 17, 1971, 1 Pa.B. 1542; amended October 9, 1972, effective October 28, 2 Pa.B. 2080; amended June 19, 1987, effective July 1, 1987, 17 Pa.B. 2464; amended May 12, 2000, effective May 13, 2000, 30 Pa.B. 2366; amended June 1, 2001, effective June 2, 2001, 31 Pa.B. 2791; corrected August 17, 2001, effective May 13, 2000, 31 Pa.B. 4536; amended August 17, 2001, effective August 18, 2001, Pa.B. 4536; amended August 9, 2002, effective August 10, 2002, 32 Pa.B. 3945; amended June 20, 2003, effective June 21, 2003, 33 Pa.B. 2878; amended July 15, 2005, effective July 16, 2005, 35 Pa.B. 3927; amended June 16, 2006, effective June 17, 2006, 36 Pa.B. 2971; amended August 22, 2008, effective August 23, 2008, 38 Pa.B. 4615. Immediately preceding text appears at serial pages (320707) to (320708).

§ 139.3. Authority to alter seasons and bag limits.

(a) *Alteration of hunting seasons.* If it is determined following review of wildlife surveys and inventory data, that certain wildlife species are available in sufficient number throughout this Commonwealth or in specific areas, or it is determined that inclement weather conditions or other factors resulted in an underharvest of certain species of wildlife, the Director has authority by order to:

- (1) Extend hunting or trapping seasons set forth in this chapter.
- (2) Designate specific areas where hunting and trapping seasons may be extended.
- (3) Increase the bag limits for those species of wildlife listed in this chapter.

(b) *Emergency authority of Director.* The Director has emergency authority to remove protection on wildlife Statewide, or in a designated area and prohibit its possession alive and order the method of disposal, if he determines the spread of a disease poses a threat to human safety, farm animals, pets and wildlife within or adjacent to this Commonwealth.

(c) *Removal of protection on wildlife.*

(1) If the Director removes the protection on wildlife in designated areas, except for animals or their parts submitted for laboratory analysis, it is unlawful to:

- (i) Remove the wildlife or their carcasses from the areas.
- (ii) Possess the wildlife alive.

(2) Nothing in this subsection prevents removal of dried or cured skins of wildlife from the areas where the protection has been removed, if removal poses no threat to other areas of this Commonwealth.

(d) *Restrictions.* If it is determined due to drought, storm, cold, heat or other uncontrollable circumstances that a specific wildlife population is not at a sufficient level to permit the seasons or bag limits established, the Director may shorten seasons or further restrict bag limits until the conditions improve.

Source

The provisions of this § 139.3 adopted July 1, 1948; amended June 19, 1987, effective July 1, 1987, 17 Pa.B. 2464; amended August 24, 1990, effective September 24, 1990, 20 Pa.B. 4488; amended July 15, 2005, effective July 16, 2005, 35 Pa.B. 3927; amended June 16, 2006, effective June 17, 2006, 36 Pa.B. 2971. Immediately preceding text appears at serial pages (312309) to (312310).

§ 139.4. Seasons and bag limits for the license year.

**2023-2024 OPEN HUNTING AND FURTAKING SEASONS, DAILY
LIMIT, FIELD POSSESSION LIMIT AND SEASON LIMIT OPEN
SEASON INCLUDES FIRST AND LAST DATES LISTED**

<i>Species</i>	<i>First Day</i>		<i>Last Day</i>	<i>Daily Limit</i>	<i>Field Possession Limit After Second Day</i>
<i>Squirrel</i> —(Combined species) ¹ Eligible Junior Hunters only, with or without the required junior license	Sept. 9		Sept. 23	6	18
<i>Squirrel</i> —(Combined species) ²	Sept. 9		Nov. 11	6	18
	Sun. ³ , Nov. 12	and	Sun. ³ , Nov. 12		
	Nov. 13	and	Nov. 18		
	Sun. ³ , Nov. 19	and	Sun. ³ , Nov. 19		
	Nov. 20	and	Nov. 24		
	Dec. 11	and	Dec. 23		

<i>Species</i>	<i>First Day</i>		<i>Last Day</i>	<i>Daily Limit</i>	<i>Field Possession Limit After Second Day</i>
	Dec. 26		Feb. 29, 2024		
<i>Ruffed Grouse</i> ²	Oct. 14 Sun. ³ , Nov. 12 Nov. 13 Sun. ³ , Nov. 19 Nov. 20 Dec. 11	and and and and and	Nov. 11 Sun. ³ , Nov. 12 Nov. 18 Sun. ³ , Nov. 19 Nov. 24 Dec. 23	2	6
<i>Rabbit, Cottontail</i> ¹ Eligible Junior Hunters only, with or without the required junior license	Sept. 30		Oct. 14	4	12

<i>Species</i>	<i>First Day</i>		<i>Last Day</i>	<i>Daily Limit</i>	<i>Field Possession Limit After Second Day</i>
<i>Rabbit, Cottontail</i> ²	Oct. 14 Sun. ³ , Nov. 12 Nov. 13 Sun. ³ , Nov. 19 Nov. 20 Dec. 11 Dec. 26	and and and and and and	Nov. 11 Sun. ³ , Nov. 12 Nov. 18 Sun. ³ , Nov. 19 Nov. 24 Dec. 23 Feb. 29, 2024	4	12
<i>Ring-necked Pheasant</i> — There is no open season for the taking of pheasants in the Franklin County Wild Pheasant Recovery Area.					
Central Susquehanna Wild Pheasant Recovery Area— <i>Male only</i> ¹	As authorized by the Executive Order				
<i>Ring-necked Pheasant</i> — <i>Male or Female</i> ¹ Eligible Junior Hunters only, with or without the required junior license	Oct. 7		Oct. 14	2	6

<i>Species</i>	<i>First Day</i>		<i>Last Day</i>	<i>Daily Limit</i>	<i>Field Possession Limit After Second Day</i>
<i>Ring-necked Pheasant—Male or Female</i> ²	Oct. 21 Sun. ³ , Nov. 12 Nov. 13 Sun. ³ , Nov. 19 Nov. 20 Dec. 11 Dec. 26	and and and and and and	Nov. 11 Sun. ³ , Nov. 12 Nov. 18 Sun. ³ , Nov. 19 Nov. 24 Dec. 23 Feb. 29, 2024	2	6
<i>Bobwhite Quail</i> —There is no open season for the taking of bobwhite quail in the area surrounding the Letterkenny Bobwhite Quail Focus Area, as designated in § 141.30 (relating to bobwhite quail recovery area).					

<i>Species</i>	<i>First Day</i>		<i>Last Day</i>	<i>Daily Limit</i>	<i>Field Possession Limit After Second Day</i>
<i>Bobwhite Quail</i> ²	Sept. 1 Sun. ³ , Nov. 12 Nov. 13 Sun. ³ , Nov. 19 Nov. 20 Dec. 11 Dec. 26	and and and and and and	Nov. 11 Sun. ³ , Nov. 12 Nov. 18 Sun. ³ , Nov. 19 Nov. 24 Dec. 23 Mar. 30, 2024	Unlimited	
<i>Hare (Snowshoe Rabbits) or Varying Hare</i> ¹	Dec. 26		Jan. 1, 2024	1	3
<i>Woodchuck (Groundhog)</i> ²	July 1 Sun. ³ , Nov. 12 Nov. 13 Sun. ³ , Nov. 19 Nov. 20	and and and and and	Nov. 11 Sun. ³ , Nov. 12 Nov. 18 Sun. ³ , Nov. 19 Nov. 24	Unlimited	

<i>Species</i>	<i>First Day</i>		<i>Last Day</i>	<i>Daily Limit</i>	<i>Field Possession Limit After Second Day</i>
	Dec. 11		June 29, 2024		
<i>Crow</i> ³ (Hunting permitted on Thursday, Friday, Saturday and Sunday only)	Aug. 24		Mar. 24, 2024		Unlimited
<i>Starling and English Sparrow</i> ³	No closed season, except season closed during the regular firearms deer season(s).				Unlimited

MIGRATORY GAME BIRDS

Except as further restricted by this chapter, the seasons, bag limits, hunting hours and hunting regulations for migratory game birds must conform to regulations adopted by the United States Secretary of the Interior under authority of the Migratory Bird Treaty Act (16 U.S.C. §§ 703—712) as published in the *Federal Register* on or about February 28 of each year.

Exceptions:

- (a) Hunting hours in § 141.4 (relating to hunting hours).
- (b) Nontoxic shot as approved by the Director of the United States Fish and Wildlife Service is required for use Statewide in hunting and taking of migratory waterfowl.
- (c) Hunting on Sunday not authorized.¹

WILD TURKEY

<i>Species</i>	<i>First Day</i>		<i>Last Day</i>	<i>Daily Limit</i>	<i>Season Limit</i>
<i>Turkey, Fall—Male or Female</i> ¹				1	1
WMU 2B	Oct. 28	and	Nov. 17		
	Nov. 22		Nov. 24		
WMUs 1A, 1B, 4A, 4B, 4D and 4E	Oct. 28		Nov. 4		
WMUs 2A, 2F, 2G, 3A, 3B, 3C, 3D and 4C	Oct. 28		Nov. 11		
WMUs 2C, 2D and 2E	Oct. 28		Nov. 11		

<i>Species</i>	<i>First Day</i>		<i>Last Day</i>	<i>Daily Limit</i>	<i>Season Limit</i>
WMU 5B WMUs 5A, 5C and 5D	Nov. 22 Oct. 31	and	Nov. 24 Nov. 2		
	Closed to fall turkey hunting				
<i>Turkey, Spring</i> ¹ Bearded Bird only, Eligible Junior Hunters only, with the required junior license	Apr. 27, 2024		Apr. 27, 2024	1	1
<i>Turkey, Spring</i> ^{1,4} Bearded Bird only	May 4, 2024	and	May 18, 2024	1	2
	May 20, 2024		May 31, 2024	May be hunted 1/2 hour before sunrise to 12 noon May be hunted 1/2 hour before sunrise to 1/2 hour after sunset	

FALCONRY

<i>Species</i>	<i>First Day</i>		<i>Last Day</i>	<i>Daily Limit</i>	<i>Field Possession Limit After Second Day</i>
<i>Squirrel</i> —(Combined species) ²	Sept. 1	and	Nov. 11	6	18
	Sun. ³ , Nov. 12		Sun. ³ , Nov. 12		
	Nov. 13		Nov. 18		
	Sun. ³ , Nov. 19		Sun. ³ , Nov. 19		

<i>Species</i>	<i>First Day</i>		<i>Last Day</i>	<i>Daily Limit</i>	<i>Field Possession Limit After Second Day</i>
	Nov. 20 Sun. ³ , Nov. 26 Nov. 27	and and and	Nov. 25 Sun. ³ , Nov. 26 Mar. 30, 2024		
<i>Quail</i> ²	Sept. 1 Sun. ³ , Nov. 12 Nov. 13 Sun. ³ , Nov. 19 Nov. 20 Sun. ³ , Nov. 26 Nov. 27	and and and and and	Nov. 11 Sun. ³ , Nov. 12 Nov. 18 Sun. ³ , Nov. 19 Nov. 25 Sun. ³ , Nov. 26 Mar. 30, 2024	Unlimited	
<i>Ruffed Grouse</i> ²	Sept. 1 Sun. ³ , Nov. 12	and and	Nov. 11 Sun. ³ , Nov. 12	2	6

<i>Species</i>	<i>First Day</i>		<i>Last Day</i>	<i>Daily Limit</i>	<i>Field Possession Limit After Second Day</i>
	Nov. 13 Sun. ³ , Nov. 19 Nov. 20 Sun. ³ , Nov. 26 Nov. 27	and and and and	Nov. 18 Sun. ³ , Nov. 19 Nov. 25 Sun. ³ , Nov. 26 Mar. 30, 2024		
<i>Cottontail Rabbits</i> ²	Sept. 1 Sun. ³ , Nov. 12 Nov. 13 Sun. ³ , Nov. 19 Nov. 20 Sun. ³ , Nov. 26 Nov. 27	and and and and and	Nov. 11 Sun. ³ , Nov. 12 Nov. 18 Sun. ³ , Nov. 19 Nov. 25 Sun. ³ , Nov. 26 Mar. 30, 2024	4	12

<i>Species</i>	<i>First Day</i>		<i>Last Day</i>	<i>Daily Limit</i>	<i>Field Possession Limit After Second Day</i>
<i>Snowshoe or Varying Hare</i> ²	Sept. 1 Sun. ³ , Nov. 12 Nov. 13 Sun. ³ , Nov. 19 Nov. 20 Sun. ³ , Nov. 26 Nov. 27	and and and and and and	Nov. 11 Sun. ³ , Nov. 12 Nov. 18 Sun. ³ , Nov. 19 Nov. 25 Sun. ³ , Nov. 26 Mar. 30, 2024	1	3
<i>Ring-necked Pheasant—Male</i> ² and <i>Female</i> (Combined)	Sept. 1 Sun. ³ , Nov. 12 Nov. 13 Sun. ³ , Nov. 19 Nov. 20	and and and and	Nov. 11 Sun. ³ , Nov. 12 Nov. 18 Sun. ³ , Nov. 19 Nov. 25	2	6

<i>Species</i>	<i>First Day</i>		<i>Last Day</i>	<i>Daily Limit</i>	<i>Field Possession Limit After Second Day</i>
	Sun. ³ , Nov. 26	and	Sun. ³ , Nov. 26		
	Nov. 27	and	Mar. 30, 2024		
<i>Mink, Muskrat, Fox, Opossum, Raccoon, Striped Skunk and Weasel</i> ²	Sept. 1		Nov. 11	Unlimited	
	Sun. ³ , Nov. 12	and	Sun. ³ , Nov. 12		
	Nov. 13	and	Nov. 18		
	Sun. ³ , Nov. 19	and	Sun. ³ , Nov. 19		
	Nov. 20	and	Nov. 25		
	Sun. ³ , Nov. 26	and	Sun. ³ , Nov. 26		
	Nov. 27		Mar. 30, 2024		
<i>Migratory Game Bird</i> ¹ —Seasons and bag limits shall be in accordance with Federal regulations.					

WHITE-TAILED DEER

<i>Species</i>	<i>First Day</i>		<i>Last Day</i>	<i>Season Limit</i>
<i>Deer, Archery (Antlered and Antlerless)^{2, 5}</i> With the required archery license WMUs 2B, 5C and 5D	Sept. 16 Sun. ³ , Nov. 12 Nov. 13 Sun. ³ , Nov. 19 Nov. 20 Dec. 26	and and and and and	Nov. 11 Sun. ³ , Nov. 12 Nov. 18 Sun. ³ , Nov. 19 Nov. 24 Jan. 27, 2024	One antlered deer and an antlerless deer with each required antlerless license.
<i>Deer, Archery (Antlered and Antlerless)^{2, 5}</i> With the required archery license WMUs 1A, 1B, 2A, 2C, 2D, 2E, 2F, 2G, 3A, 3B, 3C, 3D, 4A, 4B, 4C, 4D, 4E, 5A and 5B	Sept. 30 Sun. ³ , Nov. 12 Nov. 13 Dec. 26	and and and	Nov. 11 Sun. ³ , Nov. 12 Nov. 17 Jan. 15, 2024	One antlered deer and an antlerless deer with each required antlerless license.
<i>Deer, Muzzleloading (Antlerless only)¹</i> With the required muzzleloading license	Oct. 14		Oct. 21	An antlerless deer with each required antlerless license.

<i>Species</i>	<i>First Day</i>		<i>Last Day</i>	<i>Season Limit</i>
<i>Deer, Special firearms (Antlerless only)</i> Only Junior and Senior License Holders ⁶ Mentored Permit Holders ⁹ , Commission Disabled Person Permit Holders (to use a vehicle as a blind), and Residents serving on active duty in the United States Armed Forces or United States Coast Guard	Oct. 19		Oct. 21	An antlerless deer with each required antlerless license.
<i>Deer, Regular Firearms (Antlered and Antlerless)</i> ^{2, 5} Statewide	Nov. 25 Sun. ³ , Nov. 26 Nov. 27	and and	Nov. 25 Sun. ³ , Nov. 26 Dec. 9	One antlered deer and an antlerless deer with each required antlerless license.
<i>Deer, Flintlock (Antlered or Antlerless)</i> ^{1, 5} With the required muzzleloading license WMUs 1A, 1B, 2A, 2C, 2D, 2E, 2F, 2G, 3A, 3B, 3C, 3D, 4A, 4B, 4C, 4D, 4E, 5A and 5B	Dec. 26		Jan. 15, 2024	One antlered or one antlerless deer plus an additional antlerless deer with each required antlerless license.
<i>Deer, Flintlock (Antlered or Antlerless)</i> ^{1, 5} With the required muzzleloading license WMUs 2B, 5C and 5D	Dec. 26		Jan. 27, 2024	One antlered or one antlerless deer plus an additional antlerless deer with each required antlerless license.
<i>Deer, Extended Regular firearms (Antlerless)</i> ¹ WMUs 2B, 5C and 5D	Dec. 26		Jan. 27, 2024	An antlerless deer with each required antlerless license.

<i>Species</i>	<i>First Day</i>		<i>Last Day</i>	<i>Season Limit</i>
<i>Deer, Antlerless</i> ¹ (Letterkenny Army Depot, Franklin County and New Cumberland Army Depot, York County and Fort Detrick, Raven Rock Site, Adams County)	Hunting is permitted on days established by the United States Department of the Army.			An antlerless deer with each required antlerless license.

BLACK BEAR

<i>Species</i>	<i>First Day</i>		<i>Last Day</i>	<i>Season Limit</i>
<i>Bear, Archery</i> ^{2, 7} WMUs 2B, 5C and 5D	Sept. 16 Sun. ³ , Nov. 12 Nov. 13 Sun. ³ , Nov. 19 Nov. 20	and and and and	Nov. 11 Sun. ³ , Nov. 12 Nov. 18 Sun. ³ , Nov. 19 Nov. 24	1
<i>Bear, Archery</i> ^{2, 7} WMU 5B	Sept. 30 Sun. ³ , Nov. 12 Nov. 13	and and	Nov. 11 Sun. ³ , Nov. 12 Nov. 17	1
<i>Bear, Archery</i> ^{1, 7} WMUs 1A, 1B, 2A, 2C, 2D, 2E, 2F, 2G, 3A, 3B, 3C, 3D, 4A, 4B, 4C, 4D, 4E and 5A	Oct. 14		Nov. 4	1
<i>Bear, Muzzleloader</i> ^{1, 7} (Statewide)	Oct. 14		Oct. 21	1

<i>Species</i>	<i>First Day</i>		<i>Last Day</i>	<i>Season Limit</i>
<i>Bear, Special firearms</i> ⁷ Only Junior and Senior License Holders ⁶ , Mentored Permit Holders ⁹ , Commission Disabled Person Permit Holders (to use a vehicle as a blind), and Residents serving on active duty in the United States Armed Forces, or in the United States Coast Guard (Statewide)	Oct. 19		Oct. 21	1
<i>Bear, Regular Firearms</i> ^{2, 7} (Statewide)	Nov. 18 Sun. ³ , Nov. 19 Nov. 20	and and	Nov. 18 Sun. ³ , Nov. 19 Nov. 21	1
<i>Bear, Extended firearms</i> ^{2, 7} WMUs 2B, 5B, 5C and 5D	Nov. 25 Sun. ³ , Nov. 26 Nov. 27	and and	Nov. 25 Sun. ³ , Nov. 26 Dec. 9	1
<i>Bear, Extended firearms</i> ^{2, 7} WMUs 3A, 3B, 3C, 3D, 4C, 4E and 5A	Nov. 25 Sun. ³ , Nov. 26 Nov. 27	and and	Nov. 25 Sun. ³ , Nov. 26 Dec. 2	1

ELK

<i>Species</i>	<i>First Day</i>		<i>Last Day</i>	<i>Season Limit</i>
<i>Elk, Special Conservation Tag^{1, 8} and Special-License Tag^{1, 8} (Antlered and Antlerless)</i>	Sept. 1		Nov. 4	1
<i>Elk, Archery^{1, 8}</i>	Sept. 16		Sept. 30	1
<i>Elk, Regular^{1, 8} (Antlered and Antlerless)</i>	Oct. 30		Nov. 4	1
<i>Elk, Late^{1, 8}</i>	Dec. 30		Jan. 6, 2024	1

FURTAKING—TRAPPING

<i>Species</i>	<i>First Day</i>		<i>Last Day</i>	<i>Daily Limit</i>	<i>Season Limit</i>
<i>Mink and Muskrat</i>	Nov. 18		Jan. 7, 2024	Unlimited	
<i>Beaver</i>	Dec. 16		Mar. 31, 2024		
WMUs 1A and 1B (Combined)				20	60
WMUs 2A, 2B and 3C (Combined)				20	40
WMUs 2C, 2D, 2E, 2F, 3A, 3B, 3D, 5C and 5D (Combined)				20	20
WMUs 2G, 4A, 4B, 4C, 4D, 4E, 5A and 5B (Combined)				5	5
<i>Species</i>	<i>First Day</i>		<i>Last Day</i>	<i>Season Limit</i>	
<i>Coyote, Fox, Opossum, Raccoon, Striped Skunk and Weasel</i>	Oct. 21		Feb. 18, 2024	Unlimited	
<i>Coyote and Fox</i> Use of cable restraint devices authorized with required certification	Dec. 26		Feb. 18, 2024	Unlimited	

<i>Species</i>	<i>First Day</i>		<i>Last Day</i>	<i>Season Limit</i>
<i>Bobcat, with required bobcat permit</i> WMUs 2A, 2B, 2C, 2E, 2F, 2G, 3A, 3B, 3C, 3D, 4A, 4B, 4C, 4D and 4E	Dec. 16		Jan. 7, 2024	1
<i>Fisher, with required fisher permit</i> WMUs 1B, 2C, 2D, 2E, 2F, 2G, 3A, 3B, 3C, 3D, 4A, 4B, 4C, 4D and 4E	Dec. 16		Dec. 31	1
<i>River Otter, with required otter permit</i> WMUs 1A, 1B, 2F, 3B, 3C, 3D and 4E	Feb. 10, 2024		Feb. 17, 2024	1

FURTAKING—HUNTING

<i>Species</i>	<i>First Day</i>		<i>Last Day</i>	<i>Daily Limit</i>	<i>Season Limit</i>
<i>Coyote—(Outside of any big game season)³</i>	May be taken with a hunting license or a furtaker's license.			Unlimited	
<i>Coyote—(During any big game season)</i>	May be taken while lawfully hunting big game or with a furtaker's license.			Unlimited	

<i>Species</i>	<i>First Day</i>		<i>Last Day</i>	<i>Daily Limit</i>	<i>Season Limit</i>
<i>Opossum, Striped Skunk, Weasel</i> ²	July 1 Sun. ³ , Nov. 12 Nov. 13 Sun. ³ , Nov. 19 Nov. 20 Sun. ³ , Nov. 26 Nov. 27	and and and and and and	Nov. 11 Sun. ³ , Nov. 12 Nov. 18 Sun. ³ , Nov. 19 Nov. 25 Sun. ³ , Nov. 26 June 29, 2024		Unlimited May be hunted any hour, day or night, on open dates from July 1—Nov. 24 and Dec. 10—June 29, 2024. May only be hunted from 1/2 hour after sunset to 1/2 hour before sunrise from Nov. 25—Dec. 9.
<i>Fox</i> ³	Oct. 21		Feb. 17, 2024		Unlimited May be hunted any hour, day or night, from Oct. 21—Nov. 24 and Dec. 10—Feb. 17, 2024. May only be hunted from 1/2 hour after sunset to 1/2 hour before sunrise from Nov. 25—Dec. 9.

<i>Species</i>	<i>First Day</i>		<i>Last Day</i>	<i>Daily Limit</i>	<i>Season Limit</i>
<i>Raccoon</i> ²	Oct. 21 Sun. ³ , Nov. 12 Nov. 13 Sun. ³ , Nov. 19 Nov. 20 Sun. ³ , Nov. 26 Nov. 27	and and and and and and	Nov. 11 Sun. ³ , Nov. 12 Nov. 18 Sun. ³ , Nov. 19 Nov. 25 Sun. ³ , Nov. 26 Feb. 17, 2024	Unlimited May be hunted any hour, day or night, on open dates from Oct. 21—Nov. 24 and Dec. 10— Feb. 17, 2024. May only be hunted from 1/2 and hour after sunset to 1/2 hour before sunrise from Nov. 25— Dec. 9.	
<i>Bobcat, with required bobcat permit</i> ¹ WMUs 2A, 2B, 2C, 2E, 2F, 2G, 3A, 3B, 3C, 3D, 4A, 4B, 4C, 4D and 4E	Jan. 6, 2024		Jan. 31, 2024	1	1
<i>Porcupine</i> ²	Oct. 7 Sun. ³ , Nov. 12 Nov. 13 Sun. ³ , Nov. 19 Nov. 20 Dec. 11 Dec. 26	and and and and and and	Nov. 11 Sun. ³ , Nov. 12 Nov. 18 Sun. ³ , Nov. 19 Nov. 24 Dec. 23 Jan. 27, 2024	3	10

No open seasons on other wild birds or wild mammals.

¹ No hunting on Sunday authorized. See 34 Pa.C.S. § 2303 (relating to hunting on Sunday prohibited).

² Hunting on Sunday authorized on separately delineated Sunday date(s) only. See 34 Pa.C.S. § 2303.

³ Hunting on Sunday is authorized. See 34 Pa.C.S. § 2303.

⁴ Only persons who possess a special wild turkey license as provided for in 34 Pa.C.S. § 2709 (relating to license costs and fees) may take a second spring gobbler during the hunting license year; all other persons, including mentored youth hunters, may take only one spring gobbler. A maximum of 2 spring gobblers per license year may be taken by any combination of licenses or exceptions for mentored youth.

⁵ Only one antlered deer (buck) may be taken during the hunting license year.

⁶ Includes resident and nonresident license holders who have reached or will reach their 65th birthday in the year of the application for the license and hold a valid adult license or qualify for license and fee exemptions under 34 Pa.C.S. § 2706 (relating to resident license and fee exemptions).

⁷ Only one bear may be taken during the hunting license year with the required bear license.

⁸ Only one elk may be taken during the hunting license year with the required elk license.

⁹ Includes mentored youth and mentored adults with a valid mentored hunter permit issued under Chapter 147, Subchapter X (relating to Special Permits; Mentored Hunting Program Permit).

Appendix A. [Reserved]

Authority

The provisions of this § 139.4 issued and amended under 34 Pa.C.S.

Source

The provisions of this § 139.4 adopted June 3, 1971, effective July 3, 1971, 1 Pa.B. 1473; amended July 8, 1977, effective July 9, 1977, 7 Pa.B. 1915; amended April 30, 1982, effective May 1, 1982, 12 Pa.B. 1396; amended June 19, 1987, effective July 1, 1987, 17 Pa.B. 2464; amended October 30, 1987, effective October 31, 1987, 17 Pa.B. 4320; amended June 3, 1988, effective June 4, 1988, 18 Pa.B. 2530; amended April 28, 1989, effective April 29, 1989, 19 Pa.B. 1842; amended May 25, 1990, effective July 1, 1990, 20 Pa.B. 2752; amended May 29, 1992, effective July 1, 1992, 22 Pa.B. 2839; amended November 27, 1992, effective November 28, 1992, 22 Pa.B. 5685; amended May 28, 1993, effective July 1, 1993, 23 Pa.B. 2565; amended June 3, 1994, effective June 4, 1994, 24 Pa.B. 2797; amended May 26, 1995, effective from July 1, 1995, to June 30, 1996, 25 Pa.B. 2072; amended October 27, 1995, effective from December 1995, to June 30, 1996, 25 Pa.B. 4614; amended September 6, 1996, effective July 1, 1996, to June 30, 1997, 26 Pa.B. 4339; amended May 16, 1997, effective May 17, 1997, 27 Pa.B. 2417; amended May 29, 1998, effective May 30, 1998, 28 Pa.B. 2504; amended October 30, 1998, effective October 31, 1998, 28 Pa.B. 5486; amended May 7, 1999, effective May 8, 1999, 29 Pa.B. 2454; amended May 12, 2000, effective May 13, 2000, 30 Pa.B. 2366; amended June 1, 2001, effective July 1, 2001, to June 30, 2002, 31 Pa.B. 2793; amended July 12, 2002, effective July 13, 2002, and apply retroactively to July 1, 2002, 32 Pa.B. 3392; amended

June 20, 2003, effective June 21, 2003, 33 Pa.B. 2872; amended July 16, 2004, effective July 17, 2004, and apply retroactively to July 1, 2004, 34 Pa.B. 3705; amended July 15, 2005, effective from July 1, 2005, to June 30, 2006, 35 Pa.B. 3928; amended June 30, 2006, effective July 1, 2006, 36 Pa.B. 3244; amended June 29, 2007, effective June 30, 2007, 37 Pa.B. 2949; amended June 27, 2008, effective June 28, 2008, 38 Pa.B. 3491; amended June 5, 2009, effective July 1, 2009, 39 Pa.B. 2792; amended June 11, 2010, effective June 12, 2010, 40 Pa.B. 3096; amended September 24, 2010, effective September 25, 2010, and remain in effect until June 30, 2011, 40 Pa.B. 5454; amended May 27, 2011, effective from July 1, 2011, to June 30, 2012, 41 Pa.B. 2688; amended June 22, 2012, effective from July 1, 2012, to June 30, 2013, 42 Pa.B. 3581; amended May 31, 2013, effective July 1, 2013, to June 30, 2014, 43 Pa.B. 2999; amended May 23, 2014, effective July 1, 2014, to June 30, 2015, 44 Pa.B. 3091; amended May 29, 2015, effective July 1, 2015, to June 30, 2016, 45 Pa.B. 2596; amended May 27, 2016, effective July 1, 2016, to June 30, 2017, 46 Pa.B. 2665; amended May 5, 2017, effective July 1, 2017, to June 30, 2018, 47 Pa.B. 2603; amended May 25, 2018, effective July 1, 2018, to June 30, 2019, 48 Pa.B. 3082; amended May 17, 2019, effective July 1, 2019, to June 30, 2020, 49 Pa.B. 2500; amended May 1, 2020, effective July 1, 2020, to June 30, 2021, 50 Pa.B. 2258; amended May 21, 2021, effective July 1, 2021, to June 30, 2022, 51 Pa.B. 2929; amended June 9, 2023, effective July 1, 2023, to June 30, 2024, 53 Pa.B. 3090. Immediately preceding text appears at serial pages (404705) to (404721).

Cross References

This section cited in 58 Pa. Code § 135.41 (relating to State game lands); 58 Pa. Code § 139.6 (relating to field possession and transportation limits); 58 Pa. Code § 143.42 (relating to antlerless deer license required); 58 Pa. Code § 143.206 (relating to validity of elk licenses); 58 Pa. Code § 143.243 (relating to general); 58 Pa. Code § 147.315 (relating to purpose); 58 Pa. Code § 147.664 (relating to permit); 58 Pa. Code § 147.701 (relating to general); and 58 Pa. Code § 147.804 (relating to general).

§ 139.5. Regulated hunting grounds.

(a) The period to hunt on regulated hunting areas will be the first Monday in September through the last Saturday in April for both private and commercial areas. Sunday hunting is prohibited on commercial areas.

(b) Shooting hours are 1/2 hour before sunrise to sunset.

(c) Seasons for taking unmarked mallard ducks and other waterfowl on regulated hunting grounds will conform with established waterfowl seasons.

(d) This section may be amended to comply with further restrictions or modifications as established by the Director, the Commission or Federal authority fixing hunting hours and seasons.

Authority

The provisions of this § 139.5 amended under 34 Pa.C.S. §§ 101—2965.

Source

The provisions of this § 139.5 adopted June 3, 1971, effective July 3, 1971, 1 Pa.B. 1473; amended April 23, 1976, effective April 24, 1976, 6 Pa.B. 959; amended July 10, 1981, effective July 11, 1981, 11 Pa.B. 2492; amended June 17, 1983, effective June 18, 1983, 13 Pa.B. 1941; amended July 5, 1985, effective July 6, 1985, 15 Pa.B. 2462; amended June 19, 1987, effective July 1, 1987, 17 Pa.B. 2464; amended June 3, 1988, effective June 4, 1988, 18 Pa.B. 2530; amended May 25, 1990, effective July 1, 1990, 20 Pa.B. 2752; amended February 17, 1995, effective February 18, 1995, 25 Pa.B. 613. Immediately preceding text appears at serial page (191437).

§ 139.6. Field possession and transportation limits.

(a) *Opening day of season.* It is unlawful for a person to possess or transport game or wildlife in excess of the daily limit as set forth in § 139.4 (relating to seasons and bag limits for the license year).

(b) *Second day of season.* On the second day of the season, it is unlawful for a person to possess or transport game or wildlife, at or between the place where taken and his place of permanent residence, in excess of twice the daily limit, or the season limit, whichever applies, as set forth in § 139.4.

(c) *Following the second day of season.* After second day of the season, it is unlawful for a person to possess or transport game or wildlife, at or between the place where taken and his place of permanent residence, in excess of triple the daily limit, or the season limit, whichever applies, as set forth in § 139.4.

Authority

The provisions of this § 139.6 amended under 34 Pa.C.S. §§ 101—2965.

Source

The provisions of this § 139.6 adopted July 9, 1976, effective September 1, 1976, 6 Pa.B. 1633; amended November 23, 1984, effective November 24, 1984, 14 Pa.B. 4285; amended July 11, 1986, effective July 12, 1986, 16 Pa.B. 2527; amended June 19, 1987, effective July 1, 1987, 17 Pa.B. 2464; amended June 3, 1988, effective June 4, 1988, 18 Pa.B. 2530; amended April 28, 1989, effective April 29, 1989, 19 Pa.B. 1842; amended May 5, 2017, effective May 6, 2017, 47 Pa.B. 2609. Immediately preceding text appears at serial page (381015).

§ 139.7. [Reserved].**Source**

The provisions of this § 139.7 adopted June 10, 1966; amended September 1, 1978, effective September 2, 1978, 8 Pa.B. 2456; amended July 13, 1984, effective July 14, 1984, 14 Pa.B. 2413; amended February 21, 1986, effective February 22, 1986, 16 Pa.B. 526. Immediately preceding text appears at serial pages (110914) to (110916).

§ 139.8. [Reserved].**Source**

The provisions of this § 139.8 adopted June 3, 1971, effective July 3, 1971, 1 Pa.B. 1473; amended July 6, 1979, effective September 1, 1979, 9 Pa.B. 2264; amended July 10, 1981, effective July 11, 1981, 11 Pa.B. 2492; amended April 30, 1982, effective May 1, 1982, 12 Pa.B. 1395; amended June 17, 1983, effective June 18, 1983, 13 Pa.B. 1941; amended December 16, 1983, effective December 17, 1983, 13 Pa.B. 3879; amended July 13, 1984, effective July 14, 1984, 14 Pa.B. 2414; amended July 11, 1986, effective July 12, 1986, 16 Pa.B. 2527; reserved June 19, 1987, effective July 1, 1987, 17 Pa.B. 2464. Immediately preceding text appears at serial pages (110916) to (110917).

§ 139.9. [Reserved].**Source**

The provisions of this § 139.9 adopted July 6, 1979, effective September 1, 1979, 9 Pa.B. 2265; amended July 10, 1981, effective July 11, 1981, 11 Pa.B. 2493; amended June 17, 1983, effective June 18, 1983, 13 Pa.B. 1941; reserved June 19, 1987, effective July 1, 1987, 17 Pa.B. 2464. Immediately preceding text appears at serial page (110918).

§ 139.10. [Reserved].**Source**

The provisions of this § 139.10 adopted November 15, 1974, effective November 16, 1974, 4 Pa.B. 2380; amended September 1, 1978, effective September 2, 1978, 8 Pa.B. 2456; reserved July 13, 1984, effective July 14, 1984, 14 Pa.B. 2413. Immediately preceding text appears at serial page (110918).

§ 139.11. [Reserved].**Source**

The provisions of this § 139.11 amended March 6, 1981, effective March 7, 1981, 11 Pa.B. 810; amended September 18, 1981, effective September 19, 1981, 11 Pa.B. 3218; amended December 4, 1981, effective December 5, 1981, 11 Pa.B. 4193; amended February 12, 1982, effective February 13, 1982, 12 Pa.B. 645; amended April 30, 1982, effective May 1, 1982, 12 Pa.B. 1395; amended June 18, 1982, effective June 19, 1982, 12 Pa.B. 1870; corrected November 5, 1982, 12 Pa.B. 3905; amended November 18, 1983, effective November 19, 1983, 13 Pa.B. 3669; amended July 11, 1986, effective July 12, 1986, 16 Pa.B. 2527; reserved June 19, 1987, effective July 1, 1987, 17 Pa.B. 2464. Immediately preceding text appears at serial pages (110918) to (110919).

§ 139.12. [Reserved].**Source**

The provisions of this § 139.12 adopted March 4, 1977, effective March 5, 1977, 7 Pa.B. 609; amended September 12, 1980, effective September 13, 1980, 10 Pa.B. 3668; amended February 21, 1986, effective February 22, 1986, 16 Pa.B. 525; reserved June 19, 1987, effective July 1, 1987, 17 Pa.B. 2464. Immediately preceding text appears at serial pages (110918) to (110920) and (104959) to (104966).

§ 139.13. [Reserved].**Source**

The provisions of this § 139.13 adopted June 1, 1972, effective June 2, 1972, 2 Pa.B. 1074; amended April 23, 1976, effective April 24, 1976, 6 Pa.B. 960; reserved June 19, 1987, effective July 1, 1987, 17 Pa.B. 2464. Immediately preceding text appears at serial page (104966).

§ 139.14. [Reserved].**Source**

The provisions of this § 139.14 adopted July 5, 1985, effective July 6, 1985, 15 Pa.B. 2463; reserved June 19, 1987, effective July 1, 1987, 17 Pa.B. 2464. Immediately preceding text appears at serial page (104967).

§ 139.15. [Reserved].**Source**

The provisions of this § 139.15 adopted June 17, 1983, effective June 18, 1983, 13 Pa.B. 1941; amended July 5, 1985, effective July 6, 1985, 15 Pa.B. 2462; reserved June 19, 1987, effective July 1, 1987, 17 Pa.B. 2464. Immediately preceding text appears at serial page (104967).

§ 139.16. [Reserved].

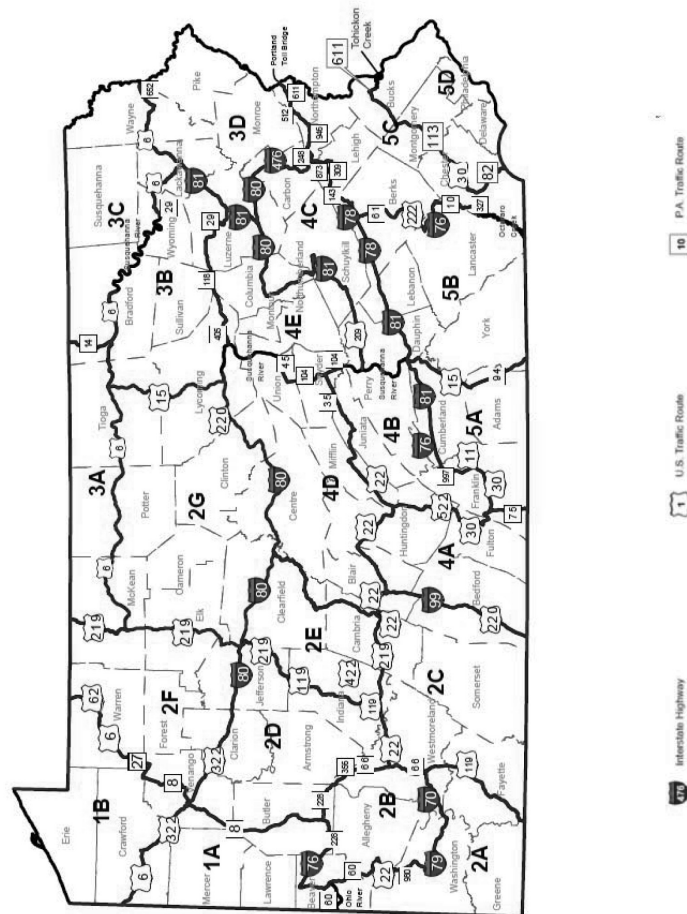
Source

The provisions of this § 139.16 adopted May 14, 1999, effective May 15, 1999, 29 Pa.B. 2576; corrected June 11, 1999, effective May 15, 1999, 29 Pa.B. 2999; reserved August 24, 2001, effective August 25, 2001, 31 Pa.B. 4650. Immediately preceding text appears at serial page (280077).

§ 139.17. Wildlife management units.

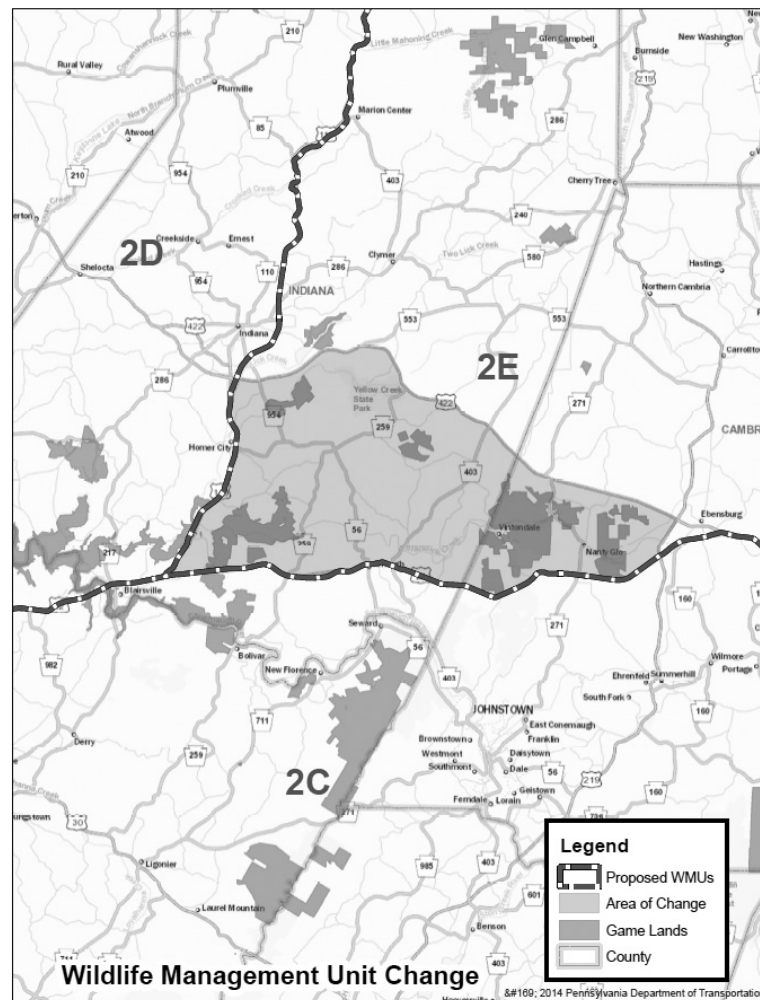
- (a) The divisional line between two or more wildlife management units shall be the center of the highway, natural water course or other natural boundary.
- (b) The outline map of Pennsylvania sets forth wildlife management units.

Wildlife Management Units



New WMU 2C—From the West Virginia/PA state line, US Route 119 north to Toll Road Route 66 near New Stanton. Toll Road Route 66 north to US Route 22 near Delmont. US Route 22 east to I-99 near Hollidaysburg. I-99 south to US Route 220 near Bedford. US Route 220 south to the Maryland/PA state line.

New WMU 2E—From near DuBois, I-80 east to PA Route 53 near Kylertown. PA Route 53 south to US Route 22 near Cresson. US Route 22 west to US Route 119 near Blairsville. US Route 119 north to US Route 219 near DuBois. US Route 219 north to I-80 near DuBois.



Authority

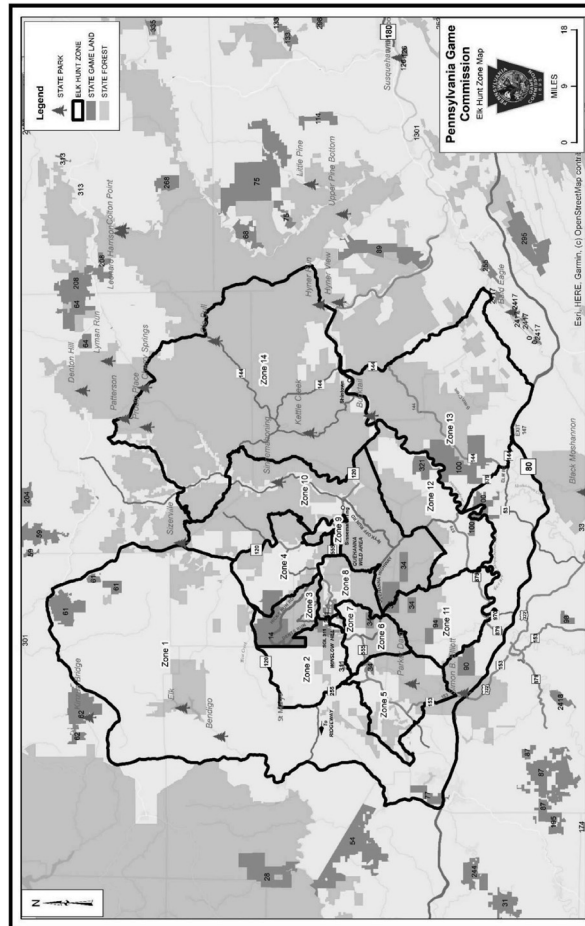
The provisions of this § 139.17 issued under 34 Pa.C.S. §§ 322(c)(1) and (4) and 2102(a); amended under 34 Pa.C.S. §§ 322(c)(4) and (6) and 2102(a).

Source

The provisions of this § 139.17 adopted June 20, 2003, effective June 21, 2003, 33 Pa.B. 2878; corrected December 5, 2008, effective June 28, 2008, 38 Pa.B. 6615; amended May 31, 2013, effective June 1, 2013, 43 Pa.B. 3006; amended May 29, 2015, effective May 30, 2015, 45 Pa.B. 2603; amended May 27, 2016, effective May 28, 2016, 46 Pa.B. 2671; amended May 12, 2017, effective May 13, 2017, 47 Pa.B. 2717; amended June 9, 2023, effective June 10, 2023, 53 Pa.B. 3100. Immediately preceding text appears at serial pages (404723) to (404725).

§ 139.18. Elk management area and hunt zones.

- (a) The elk management area is broad geographical range used for management of the Commonwealth's elk population.
- (b) Elk hunt zones are those individual and distinct areas within the elk management area in which elk may be hunted according to annual elk allocations.
- (c) The division line between two or more hunt zones shall be the center of the highway, road, natural water course or other natural boundary.
- (d) The outline map of the elk management area sets forth the elk hunt zones.



Authority

The provisions of this § 139.18 added under 34 Pa.C.S. §§ 2102(a) and 2722(g).

Source

The provisions of this § 139.18 adopted May 21, 2021, effective May 22, 2021, 51 Pa.B. 2937.

[Next page is 141-1.]

139-30

(414524) No. 586 Sep. 23

Copyright © 2023 Commonwealth of Pennsylvania